



2025 WESTERN FOREST ECONOMISTS MEETING

# Understanding WA DNR



Duane Emmons – Assistant Deputy for State Uplands

May 14<sup>th</sup> 2025

# Who is DNR?

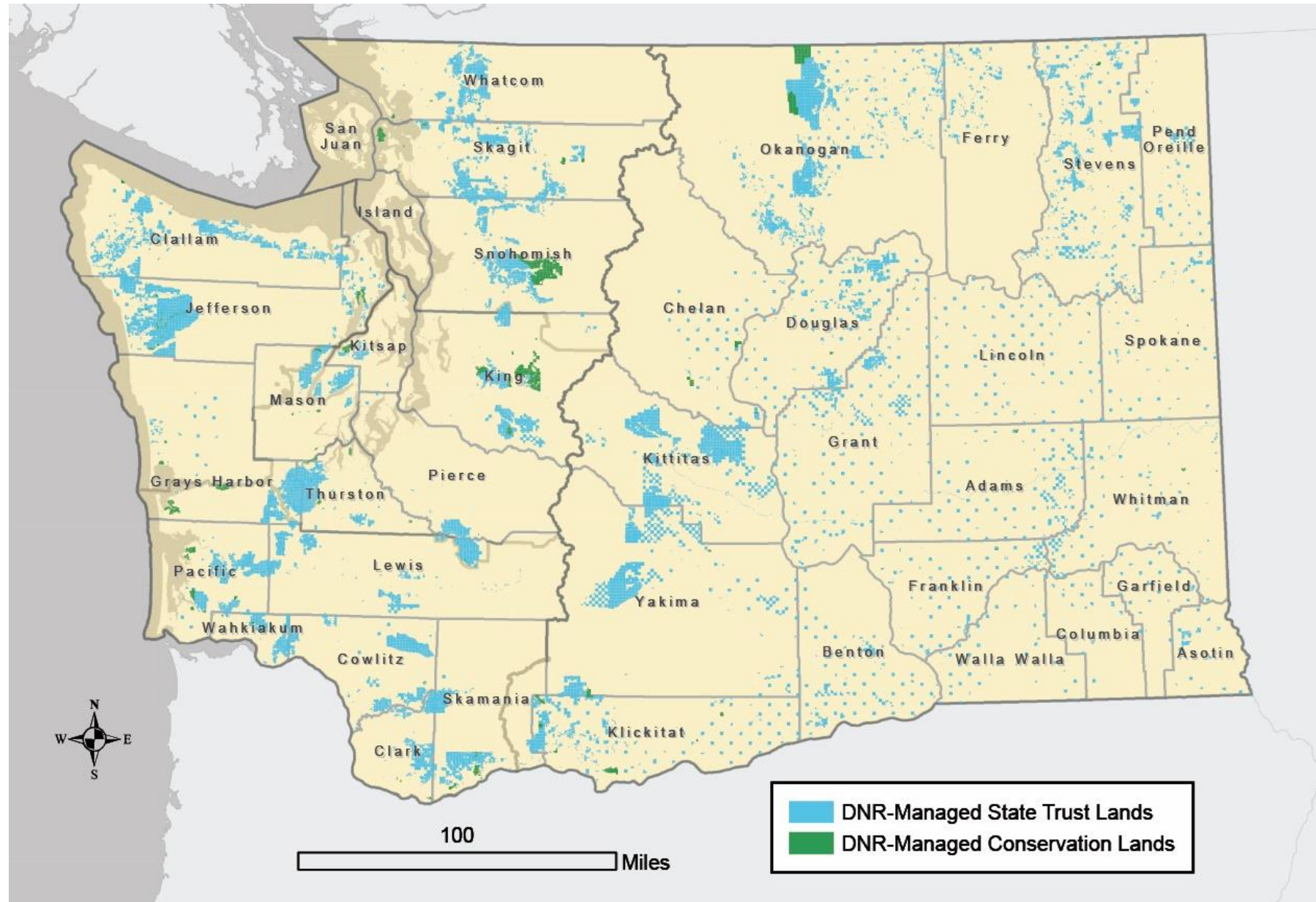
State agency responsible for managing 5.6 million acres of public land in Washington.

- 2.9 million acres state trust lands, managed to generate revenue for trust beneficiaries and provide other benefits to the people of Washington; 2.1 million acres are forested.
- Remaining acres includes aquatic lands and land managed under the Natural Areas Program.





# Where are DNR Managed Lands?

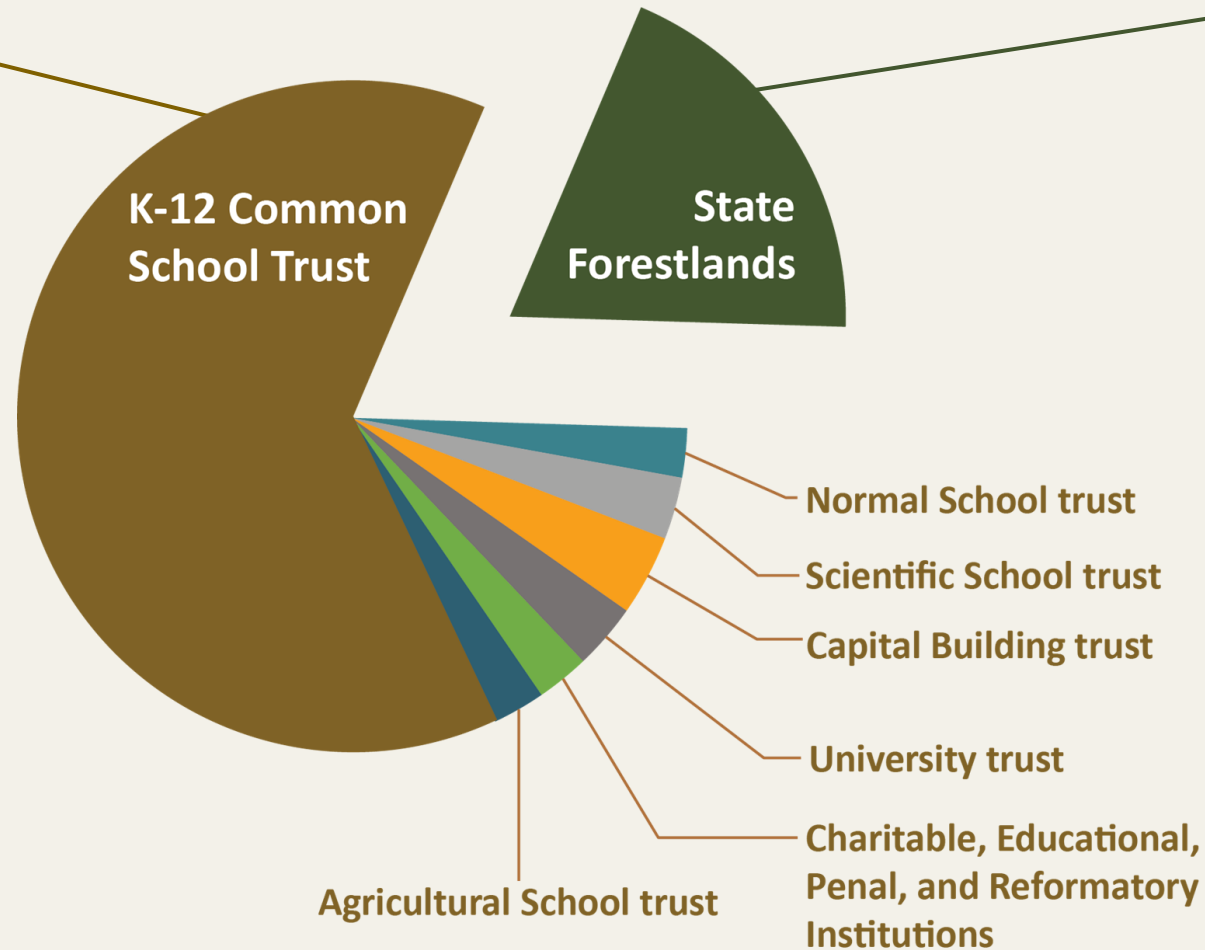


# Types of State Trust Lands

## State Lands

### Federally granted lands

- Enabling Act (25 U.S. Statutes at Large, c 180 p. 676)
- State Constitution
- Revenue generated from a variety of sources
- Source of financial support, primarily for public schools and colleges



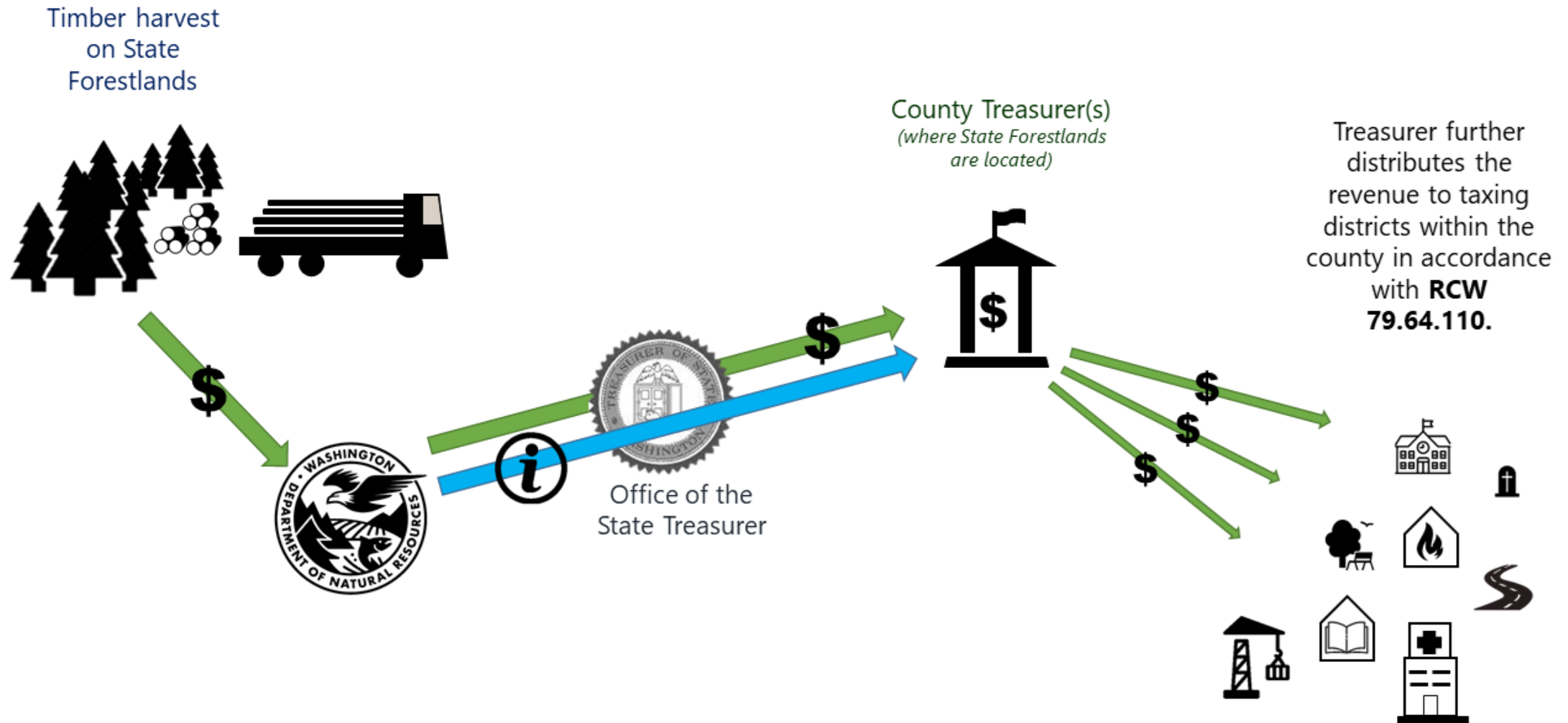
## State Forestlands

### Two types: Transfer and Purchase

- > 617,000 acres\*
- Acquired by counties through tax foreclosures, purchased, or deeded to state as gift.
- Statutory trusts
- Revenue helps fund county services, state schools, and junior taxing districts
- 21 counties
- Revenue goes to county in which it is generated



# State Forestland Revenue Flow



# DNR's Fiduciary Responsibility

- Generate revenue and other benefits for each trust, in perpetuity.
- Preserve the corpus of the trust.
- Exercise reasonable care and skill.
- Act prudently to reduce the risk of loss for the trusts.
- Maintain undivided loyalty to beneficiaries.
- Act impartially with respect to current and future beneficiaries.



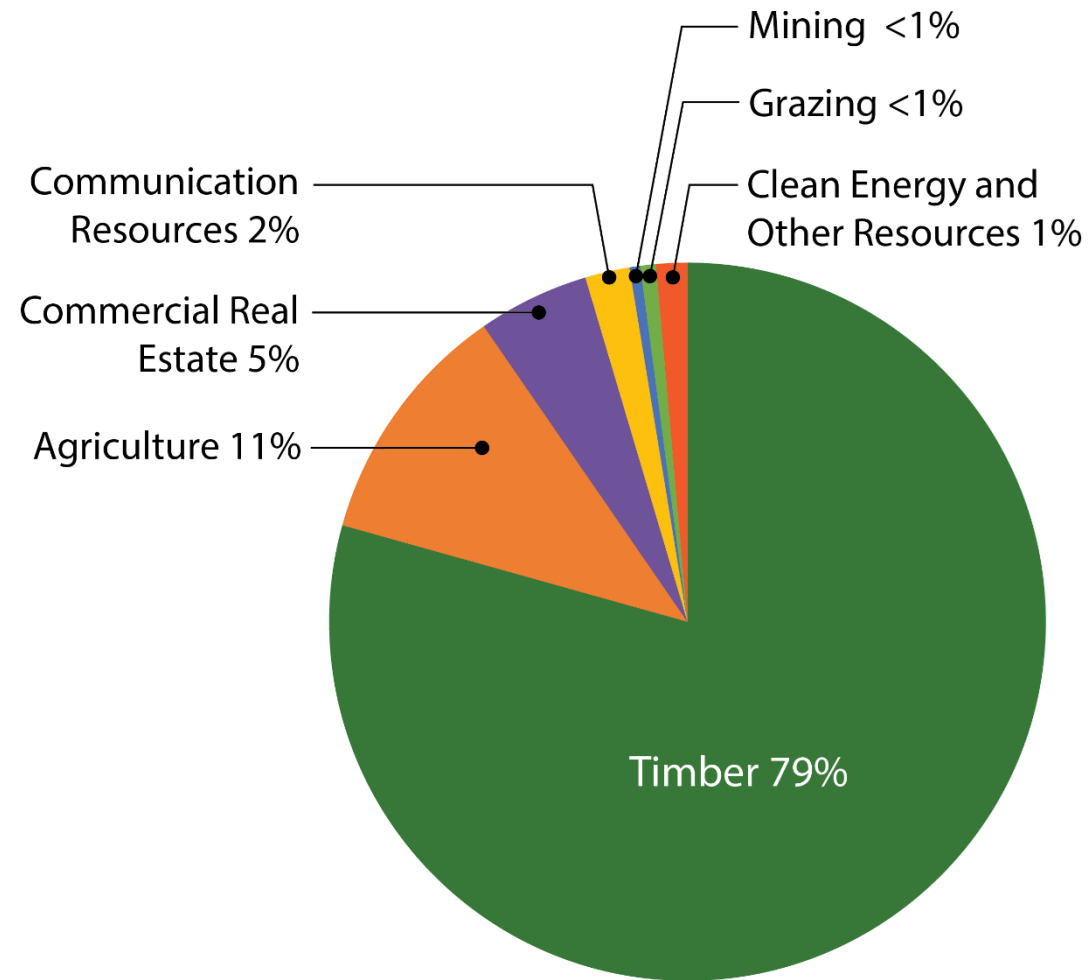


# Revenue Generating Activities

- Annual revenue over \$200 million per year.
- Approximately 79% of annual revenue is generated from the 2.1 million acres in the timber asset class.
- This asset class generates approximately \$1.5 billion per year in economic activity.



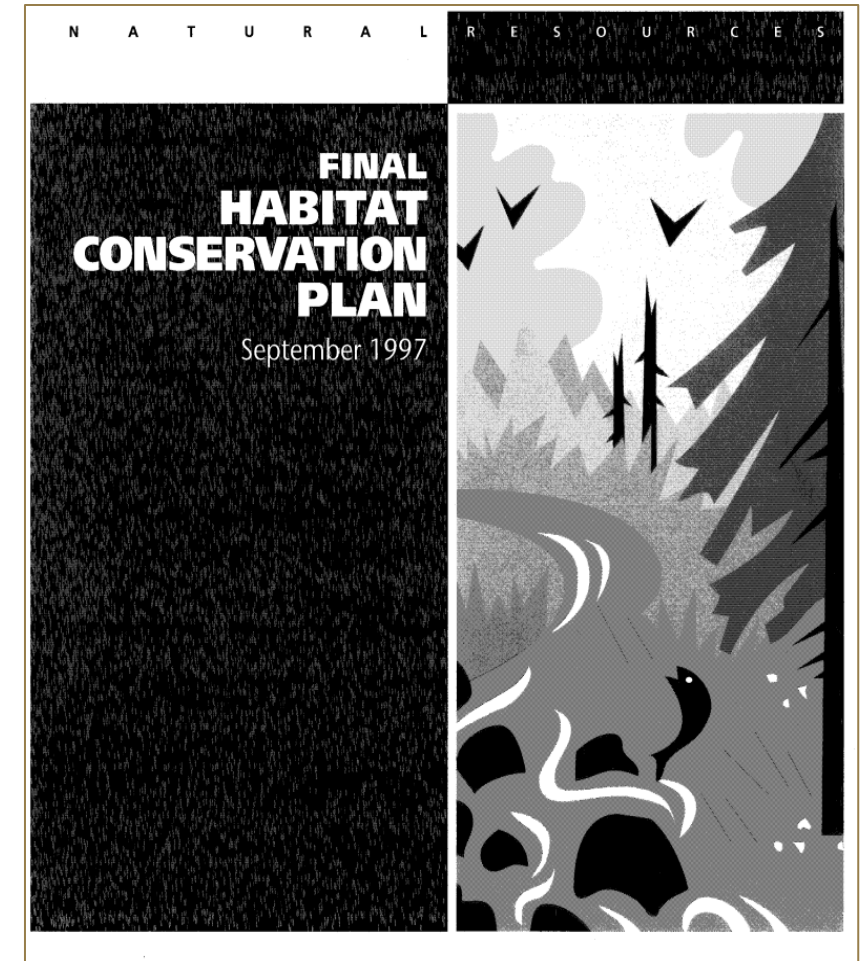
# Other Major Sources of Revenue





# State Trust Lands Habitat Conservation Plan (1997)

**Purpose:** Protect habitat for at-risk species while carrying out forest management and other activities to generate revenue for trust beneficiaries.



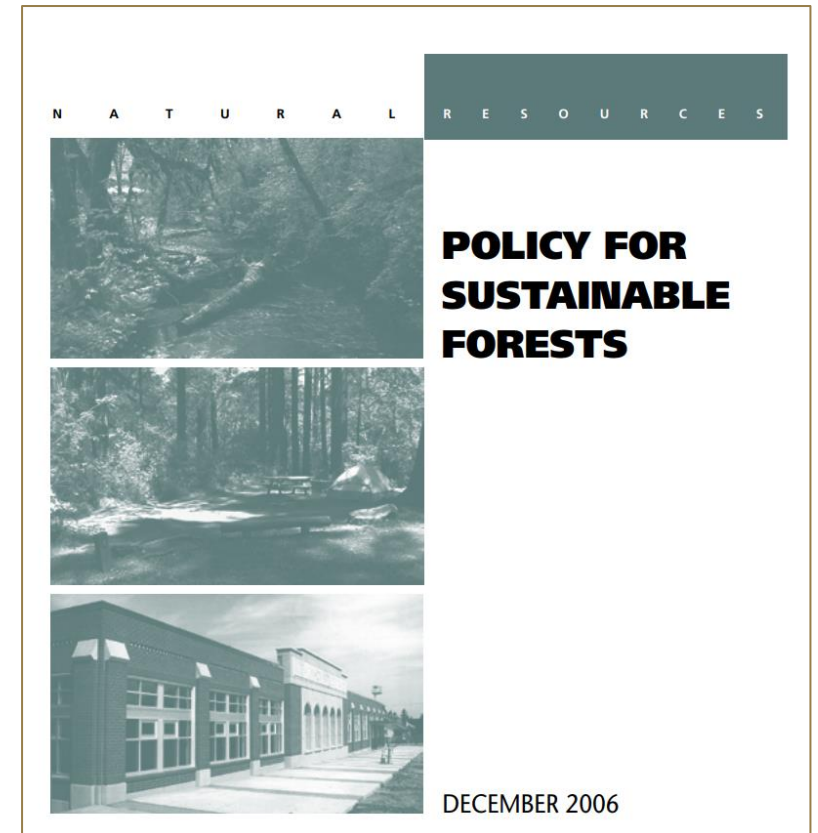
# Old Growth Policy

- Defer from harvest old-growth stands (stands 5 acres and larger, in the most structurally complex state of stand development, that originated naturally before the year 1850).
- Retain known, very large diameter, structurally unique trees.



# Policy for Sustainable Forests (2006)

**Purpose:** To conserve and enhance the natural systems and resources to produce long-term sustainable trust income, and environmental and other benefits for the people of Washington, consistent with the fiduciary standards governing trust management.





# Categories of Policies



**Economic  
Performance**



**Forest Ecosystem  
Health and  
Productivity**



**Social and  
cultural benefits**



**Implementation**

# Putting it All Together

- Nearly half of forested state trust lands are managed specifically for ecological objectives.
- Over time, location of structurally complex forest has shifted into ecologically focused areas.
- Additional areas are protected when timber sales are designed; examples: unmapped streams and wetlands, unstable slopes, leave tree clumps.
- Objective to achieve 10-15% of each HCP planning area in old growth type structure *over time*.





# 2023 Legislative Proviso:

Collaborate on approaches to DNR forest management in the context of the following goals:

- Conserve and manage older, carbon-dense, structurally complex forest stands located on DNR-managed lands;
- Increase carbon sequestration and storage in forests and harvested wood products from DNR-managed forestlands;
- Generate predictable beneficiary revenue;
- Maintain timber supplies that support local industry; and
- Address economic needs in rural counties.





# Questions

